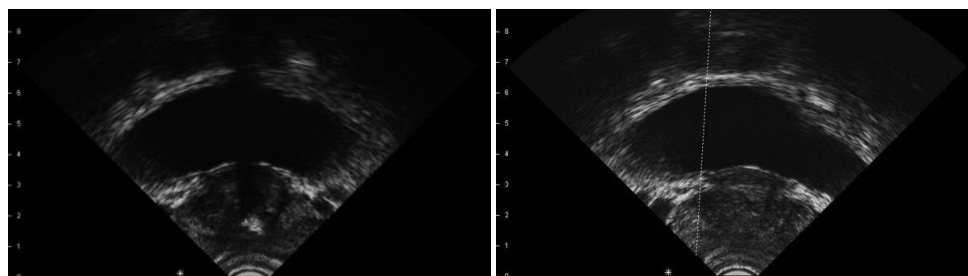


Transrectal 99-5511



Prostate

Prostate Biopsy

Applications

- Prostate Imaging and Biopsy
- Urethra, Bladder, Rectum
- Seminal Vessel Imaging
- Prostate Volume
- Compatible needle guide – CIVCO 610-1091

Specifications

Depth Range: 0.5 cm - 10 cm	Focal Zone: 0.5 cm - 4 cm
Pulse Frequency: 7.5 MHz, 12 MHz, 15 MHz, 24 MHz	Focal Point: 2 cm
Scan Angle: 90 degrees	Patient Contact: 21 mm
Frame Rate: 15 fps	Cable: USB 2.0, 2 m (5 m opt.)
Size: 15.5 cm by 3.5 cm	Computer OS: Windows 7, 8
Weight: 100 g	Processor, RAM: 4 GHz, 4 MB

Interson designs, manufactures, sells, and supports a variety of USB ultrasound probes in our ISO 13485 facility. All probes are manufactured in the United States and are subject to regulation by the U. S. Food and Drug Administration and other international, state, and local regulations. Interson's SeeMore Windows application and SDK provide procedure assisted imaging and real time display of ultrasound images on desktop, notebook and tablet computing devices for human, veterinary, telemedicine, and research applications. Probes come with a standard one year warranty, extended warranties are available.