



# SiMPLi Series

## GP-C01 Point-of-Care USB Curved Array Transducer

**Ready for user-friendly ultrasound at the patient bedside?** Simply connect the USB probe cable directly to your Windows laptop or tablet and you instantly have a lightweight, handheld and portable ultrasound imaging system for all of your point-of-care imaging needs.

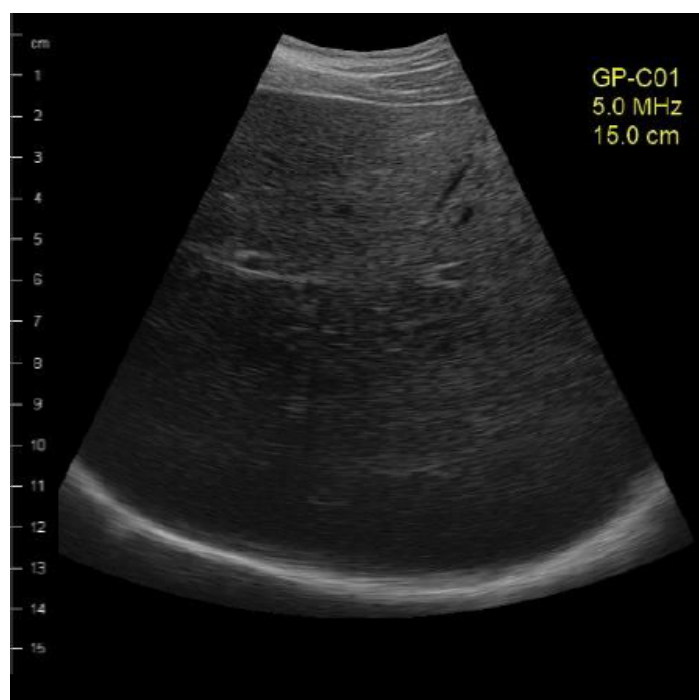


# Specifications

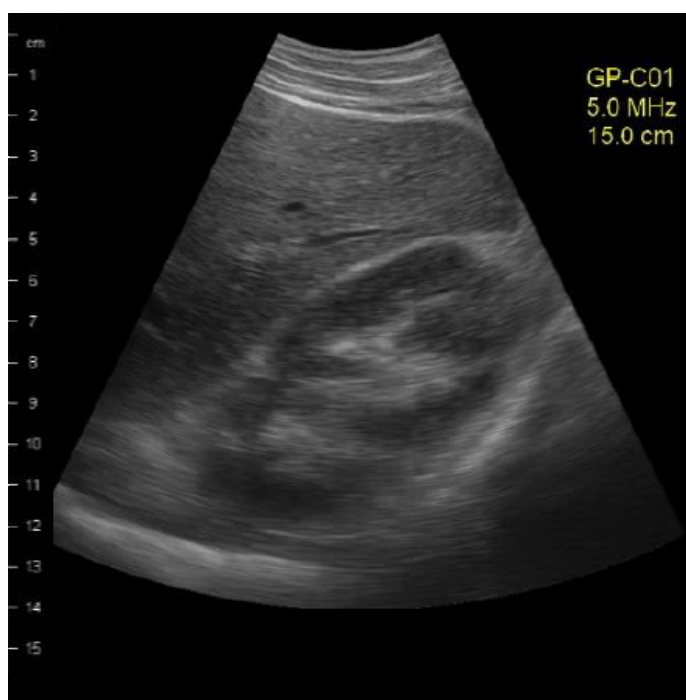
Depth Range	1 - 21 cm
Focus	Dynamic over full depth range
Bandwidth	3.5 - 7.5 MHz
Scan Angle	60°
Features	2D, curved array, color flow imaging, lightweight transducer with flexible cable
Indications	eFAST, Abdominal, Urology, Fetal, OB, GYN, MSK, Pelvis
Weight	110 grams
Cable	USB 2.0, 2 meter (5 meter optional)
System Requirements	OS: Windows 7, 8, 10 Processor/RAM: 2 GHz/4 GB

## Lightweight. Reliable. Flexible.

For more information regarding the GP-C01 or our other transducers, contact us at **[interson.com/contact-us](http://interson.com/contact-us)** or call us at **(925) 462-4948**.



Liver/Diaphragm



Kidney



Bladder

